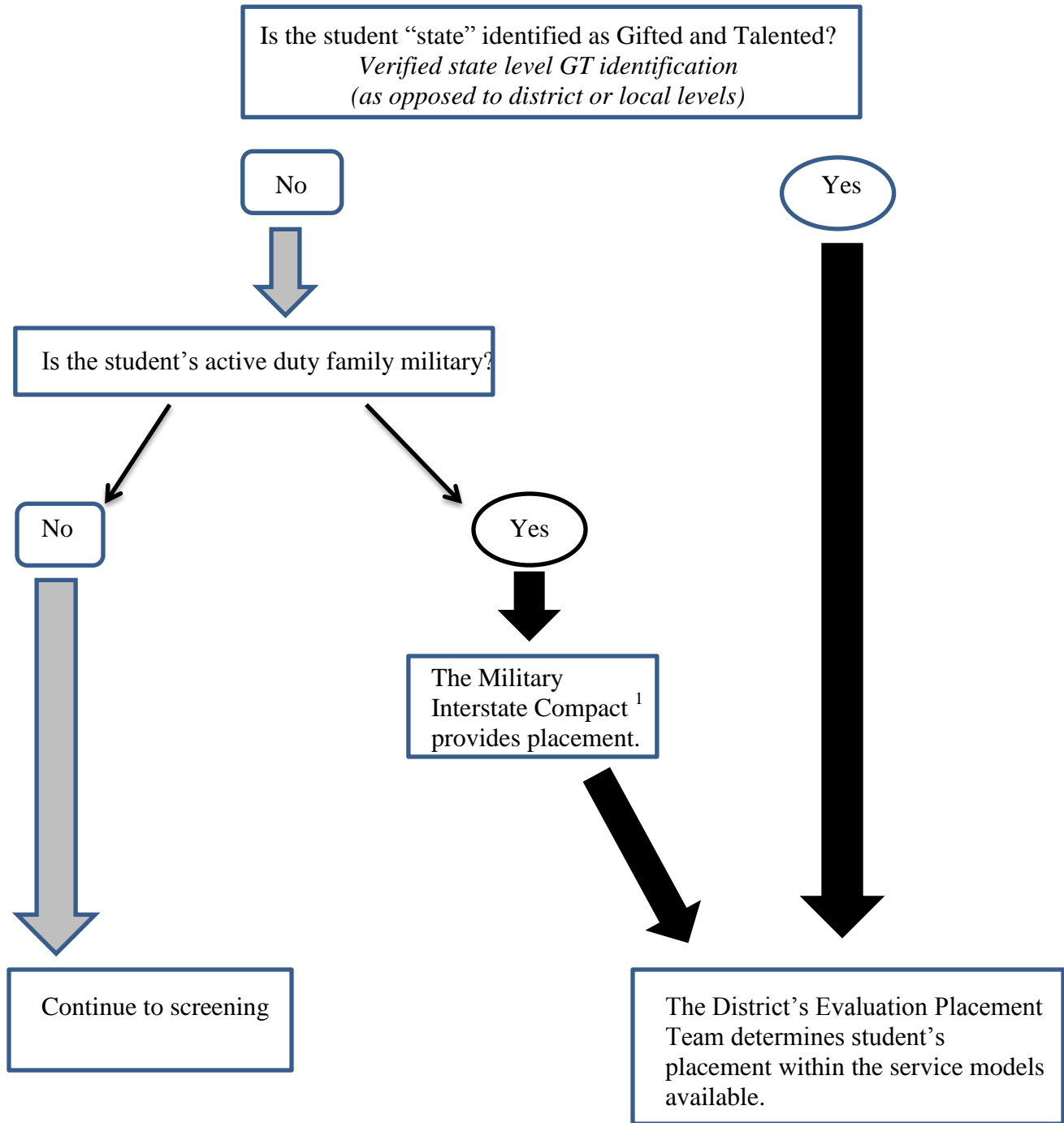
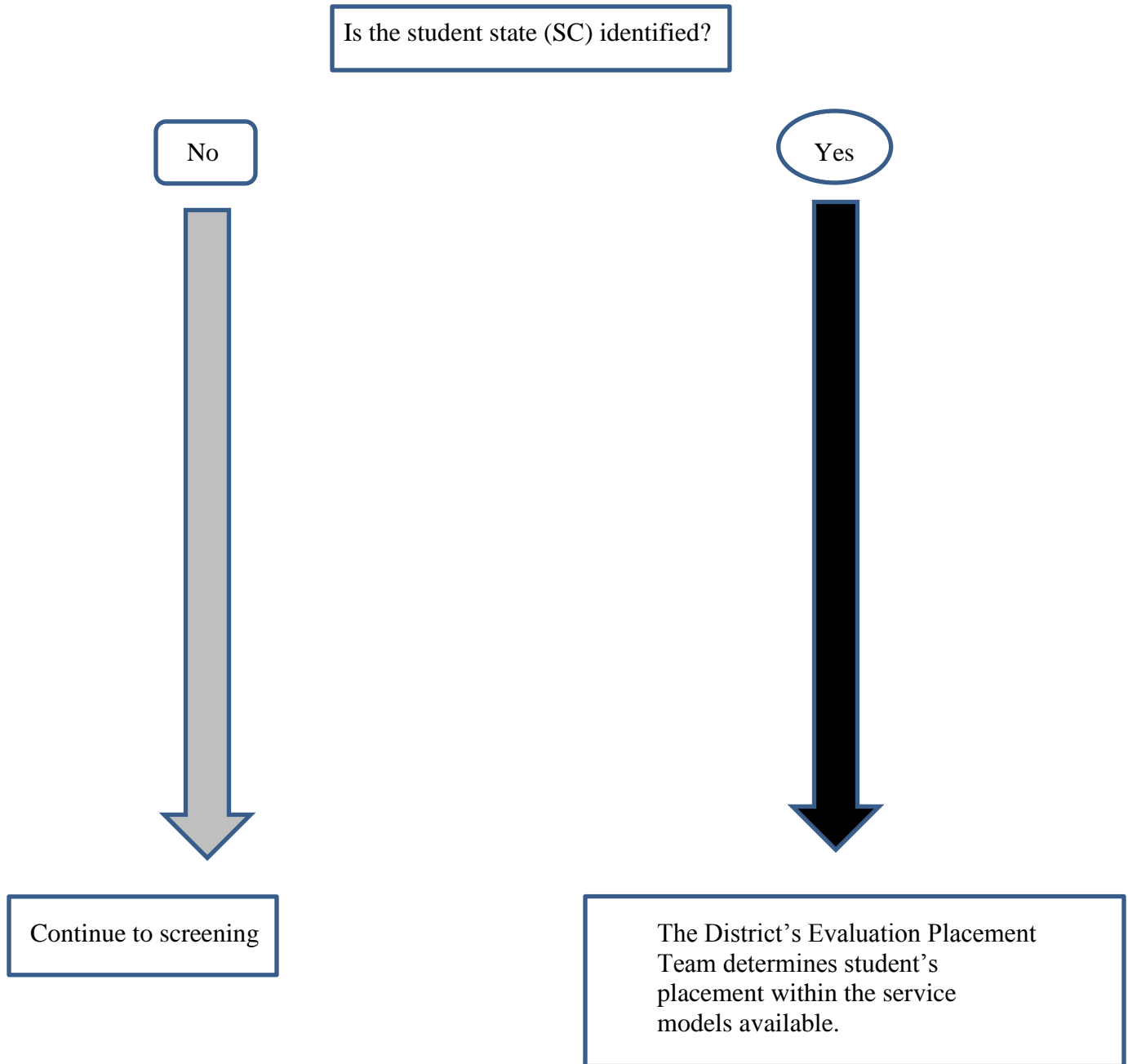


Gifted and Talented Identification in South Carolina: Student moving to South Carolina (SC)



¹ More information about the Military Interstate Compact qualifications may be found at: <http://www.mic3.net/documents/MIC3CommissionRules-Final-amendedNov2012v2.pdf>

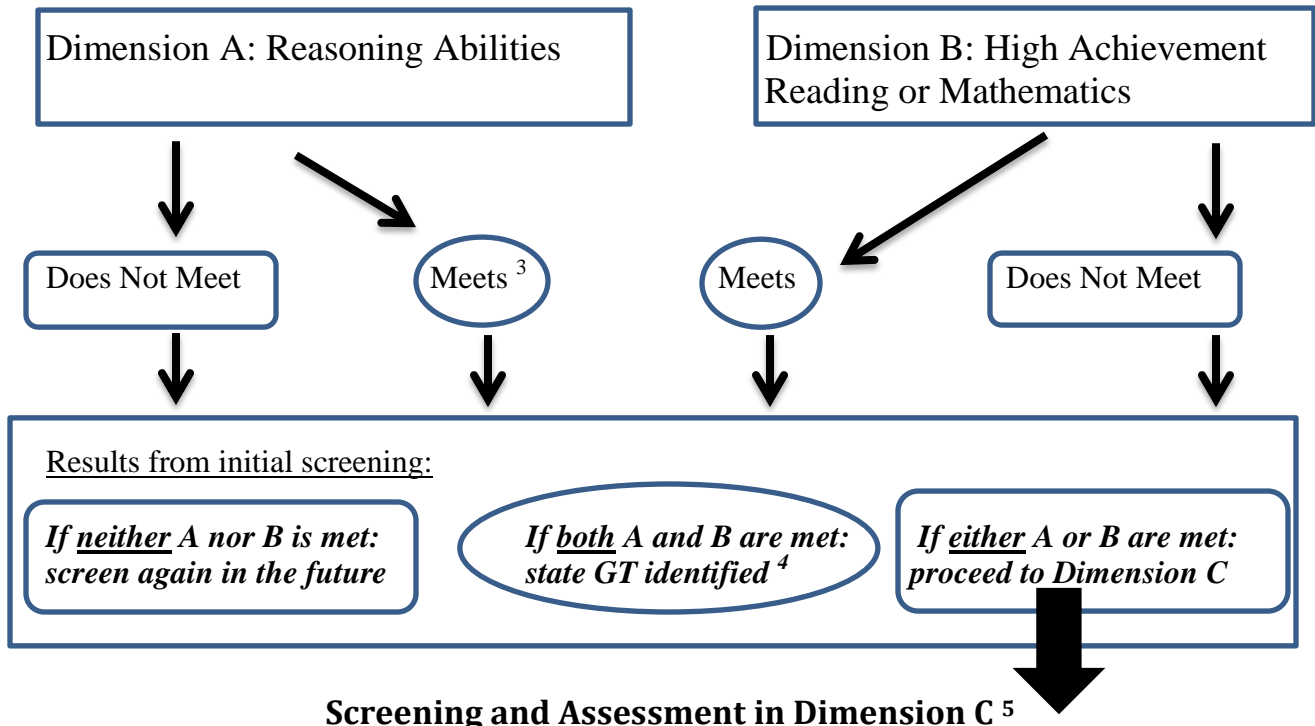
Gifted and Talented Identification in South Carolina: Student moving within South Carolina (SC)



Student Gifted and Talented Screening ² for State Identification (Academic)

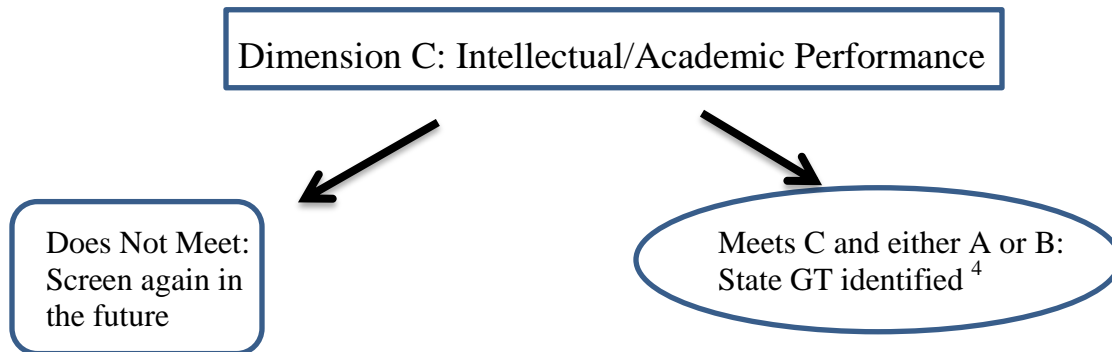
Grade Two Census Screening and Nominated Students for Gifted and Talented Identification

Initial Level Screening and Assessment in Dimensions A and B



Screening and Assessment in Dimension C ⁵

After initial screening in Dimensions A and B, with either ONE Dimensions A or B met



² Screening includes examining existing data and administering assessment if needed.

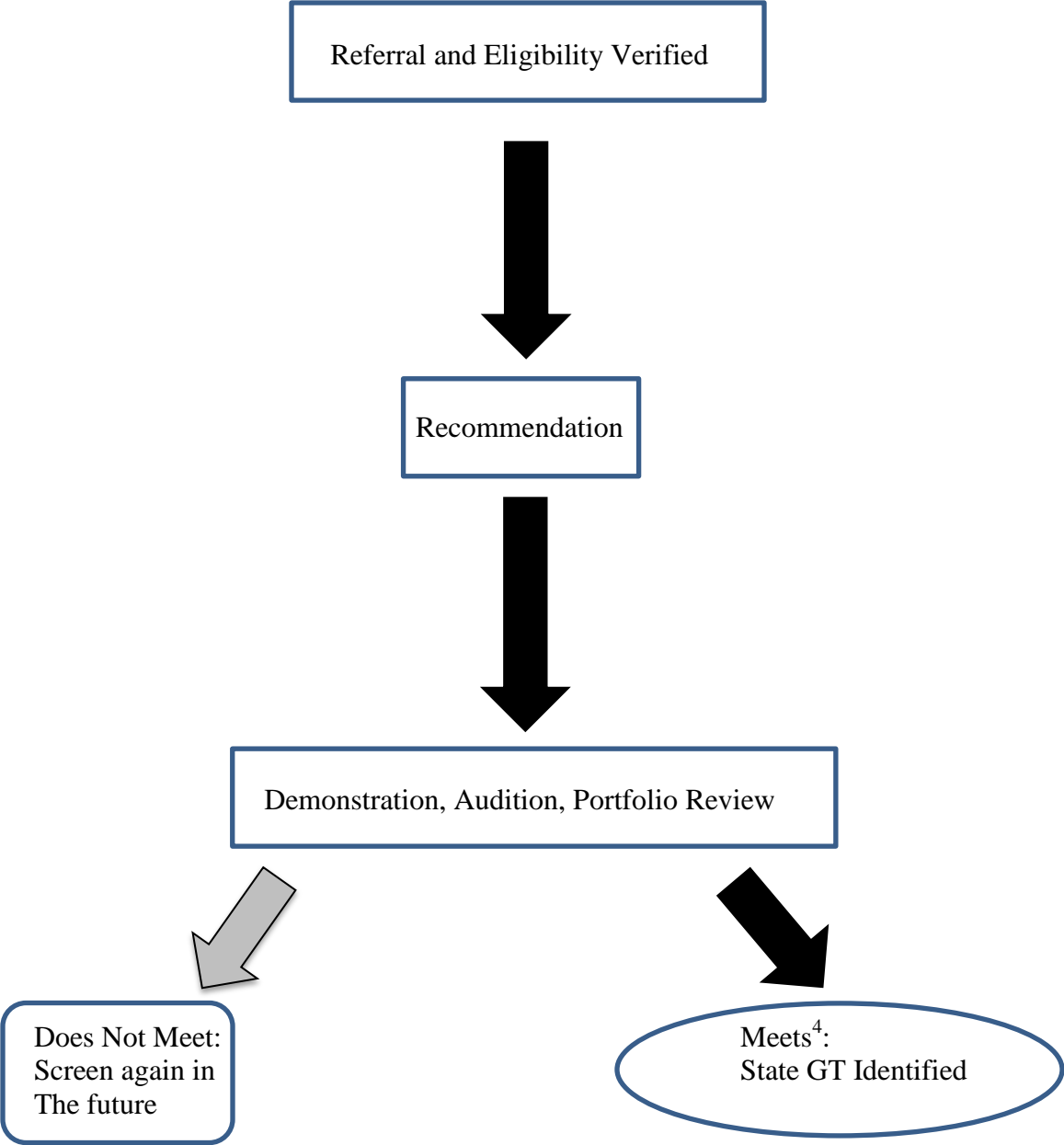
³ A qualifying national age percentile Dimension A composite score (for the verbal/linguistic, quantitative/mathematical, and nonverbal categories) may automatically identify a student as state GT. Qualifying scores for the Composite are: Grades one and two placement – 98th National Age Percentile; Grades three through twelve- 96th National Age Percentile.

⁴ The student meets the state level GT identification criteria. The District’s Evaluation Placement Team determines student’s placement within available service models.

⁵ Students must be screened in Dimensions A and B before being screened in Dimension C.

Student Gifted and Talented Screening for State Identification (Artistic)

Gifted and Talented Artistic Identification varies by district and is dependent on GT artistic offerings.



⁴The student meets the state level GT identification criteria. The District’s Evaluation Placement Team determines student’s placement within available service models.